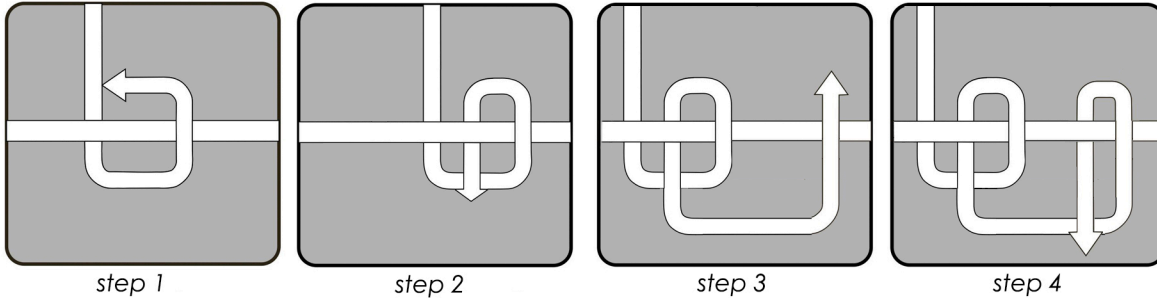
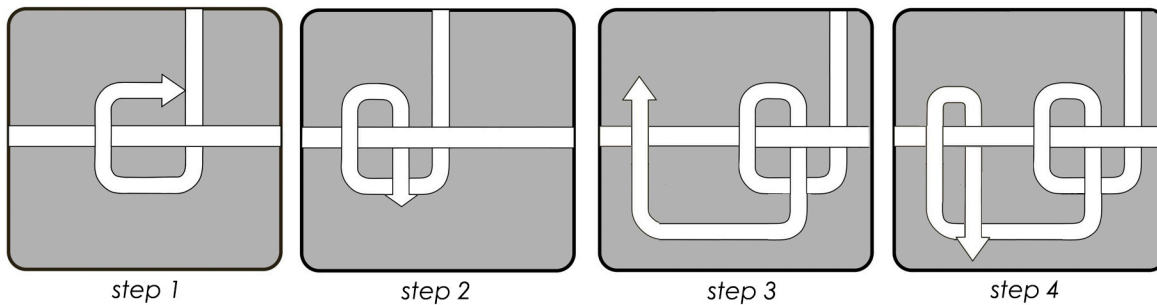


## Double Half Hitch (DHH)

Rows from left to right ==>>

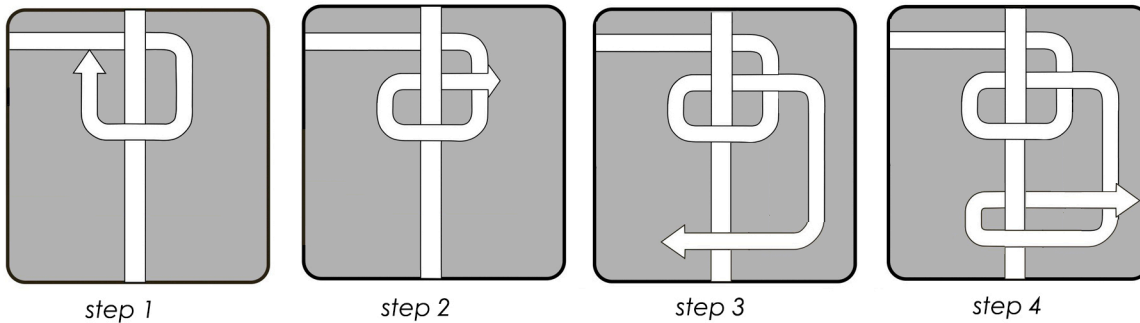


<<== Rows from right to left

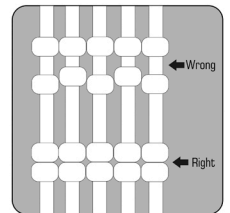
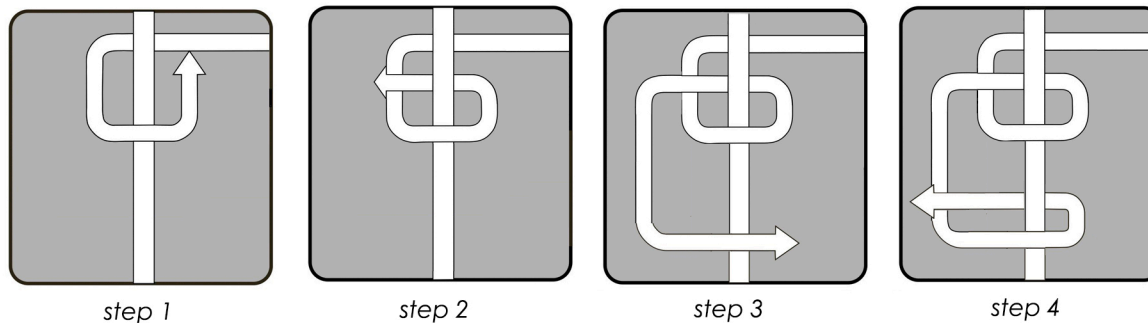


## Vertical Double Half Hitch (VDHH)

From left to right ==>>



<<== From right to left



The vertical double half hitch has a tendency to separate in the middle or create a space between the 2 wraps. use your finger to push the bottom part of the knot towards the top so that the knots will be placed one on top of the other nicely

Mastering a uniform knotting takes practice and repetition. I would recommend creating a sample of the basic knots while going through the following steps before starting your jewelry projects